



## SERIES SIP-MAEXP

RATED UP TO CID2, FEATURING 140 LUMENS PER WATT, THREE POWER OPTIONS, AND THREE AVAILABLE BEAM ANGLES; THE MAEXP SERIES BRINGS VERSATILITY, DESIGN EXCELLENCE, AND DURABILITY TO HAZARDOUS LOCATION LIGHTING. THE BLOCK SERIES IS SUITABLE WHEN FLAMMABLE GASES, CORROSIVE VAPORS, COMBUSTIBLE DUSTS, AND OTHER HAZARDS ARE PRESENT.



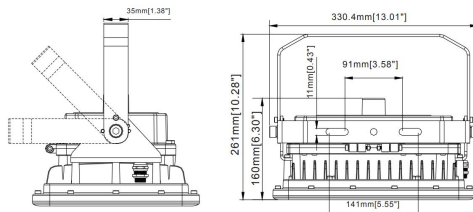
PICTURED WITH YOKE MOUNTING OPTION



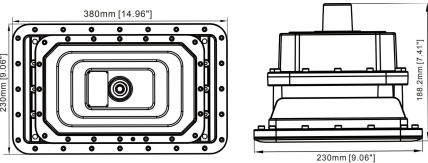
## CERTIFICATIONS AND RATINGS

CLASS I DIVISION 2, GROUPS A,B,C,D  
 CLASS II DIVISION 2, GROUPS F,G  
 CLASS III  
 CSA C22.2 No. 137-M1981; 30-M1986  
 CSA C22.2 No. 25-1966  
 CSA C22.2 No. 250.0-08; 250.13-14  
 UL 844 HAZARDOUS LOCATIONS  
 UL 1598A MARINE VESSELS  
 UL 1598 WET LOCATIONS  
 UL 8750 LED SAFETY  
 IP66  
 DLC (CONTACT US)  
 ABS (PENDING)

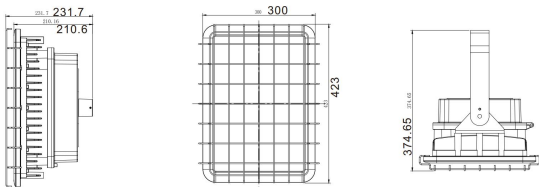
## DIMENSIONS



80W-100W



150W-200W



300W-400W

## SPECIFICATIONS

VOLTAGE/FREQUENCY	AC120-277V 50/60HZ AC200-480V 50/60HZ
POWER FACTOR	≥99%
THD	<10%
SURGE PROTECTION	4KVA
AMBIENT TEMPERATURE	-40°F TO 140°F (-40°C TO 65°C)
T-CODE RATING	CLASS I DIVISION 2 - T4A CLASS II DIVISION 2 - T4A
CONSTRUCTION	DIE-CAST ALUMINUM
LENS MATERIAL	TEMPERED GLASS
HARDWARE	MARINE GRADE STAINLESS STEEL
FINISH	THERMOSET POWDERCOAT
CONNECTION	3/4" NPT
POWER	80W, 100W, 150W, 200W, 300W, 400W
LUMEN OUTPUT	140LM/W
AVAILABLE OPTICS	25° 60° 120°
COLOR RENDERING INDEX	RA>70
L70	>50,000 HOURS
WARRANTY	LEDs: 10 YEARS DRIVER: 7 YEARS

SALES@SIINPROLIGHTING.COM

# ORDER INFORMATION

# BLOCK SERIES

EXAMPLE: BLK-80-120-277-5000K-120-H2-CLR-GREY-PEND

SIP-MAEXP	80	120-277	5000K	120	H2	CLR	GREY	PEND
-----------	----	---------	-------	-----	----	-----	------	------

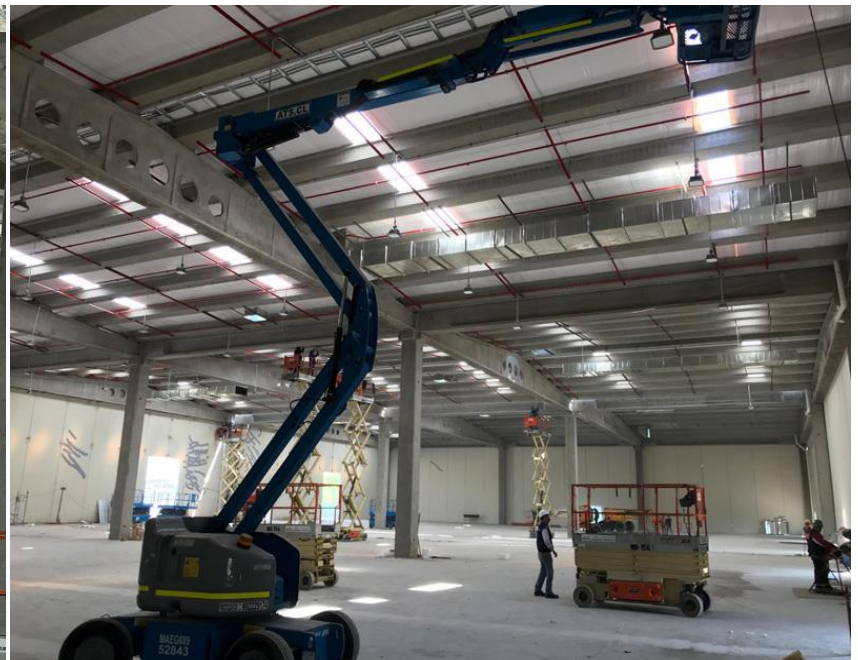
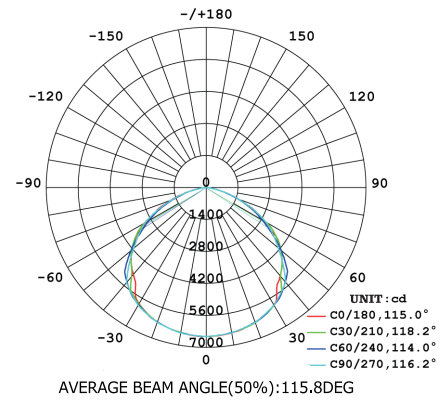
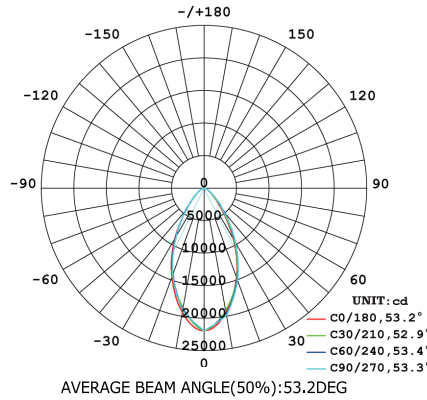
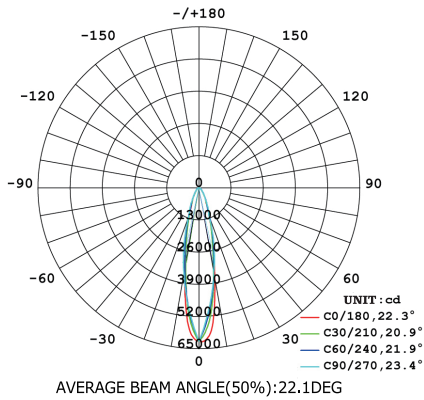
FIXTURE	WATTAGE	VOLTAGE	CCT	BEAM	RATING	LENS	COLOR	MOUNTING
	80W 100W	120-277	5000K	120°	H2-CID2	CLEAR	GREY	PENDANT
	150W 200W	200-480*	4000K*	60°*				
	300W 400W		3000K**	25°*				

## ACCESSORIES

- YOKE: YOKE MOUNT
- AVBY: ANTI-VIBRATION YOKE MOUNT
- STAN: SLIP-FIT STANCHION MOUNT KIT
- FCB: SAFETY CABLE KIT
- WG: LENS WIRE GUARD
- SP1: 4KV SURGE PROTECTOR



## PHOTOMETRICS



SALES@SIINPROLIGHTING.COM

5756 GRACEPI, LOSANGELES CA 90022, USA

WWW.SIINPROLIGHTING.COM

